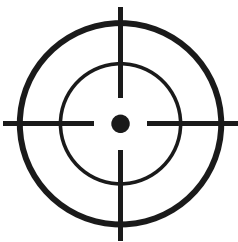


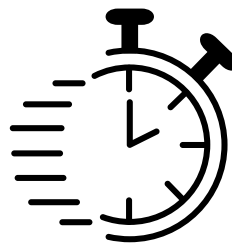
The new released eviXscan 3D Suite 2.9 software with new scan generator and improved merging algorithms



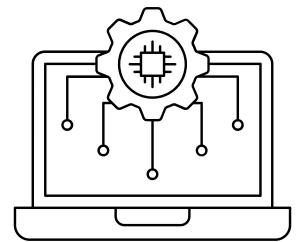
Version 2.9 of the eviXscan 3D Suite software introduces several enhancements to key algorithms. Improvements in scanning parameters are also evident in the older generation of eviXscan 3D scanners. Thanks to that it is possible to obtain better scanning results without the need to change the scanner for a newer model.



Better quality



Less time



New algorithms

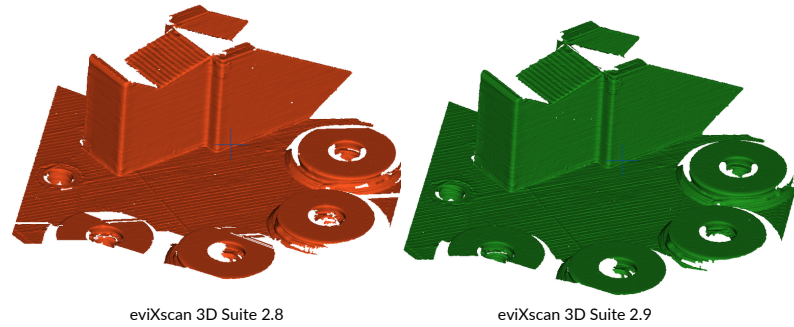
New Automation tab - for integration with cobots, robots and eviXmatic 2.0

Enriched automation tab for more effective integration with robotic systems and dedicated quality control stations such as eviXmatic 2.0® ensures efficient performance of fully automated quality control process without human intervention, increasing its reliability and efficiency.



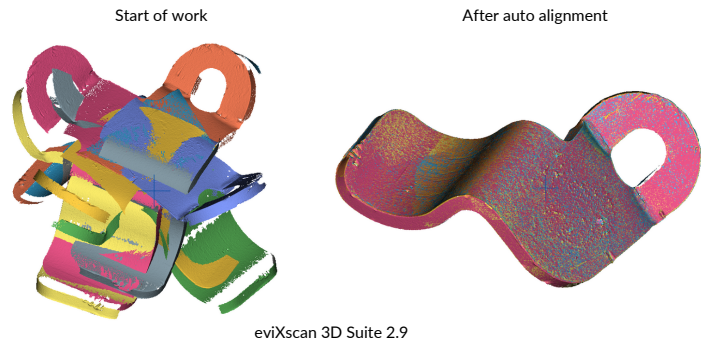
Explore the latest features of the eviXscan 3D Suite software

New scan generator



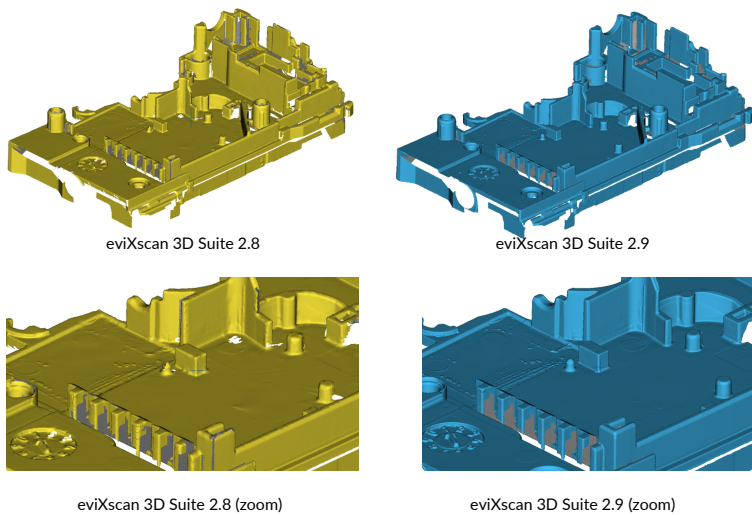
Thanks to improvement of the algorithm, it is possible to obtain scans of much better quality and simultaneously shorten the time of their generation. More accurate mapping of the scanned surface improves the quality control process. The new algorithm also reduces the need for matting powder in some cases.

Auto alignment



Auto alignment is the automation of the manual fitting process. That alignment can be done in post processing, but also during scanning process - the algorithm can align single scans to previous basing on the shape of the workpiece, its curvatures and surfaces.

New version of Merging



With default parameters it is faster than the previous one in addition better processes base scans into final mesh. It generates less points on flat areas but much more on the edges.

New features during scanning

Additional scanning features, such as auto exposure for markers. This function automatically selects the optimal exposure settings for scanning with markers.

Extended post-processing



There are some new options in post-processing, such as: remove markers and artifacts, mesh separation, filling holes and building auxiliary surfaces, smoothing. The introduction of these options makes working with the software easier, faster and more accurate.

ADD. SCANNING FEATURES

- HDR mode
- Marker auto exposure
- Use auto alignment
- Include markers/artefacts

